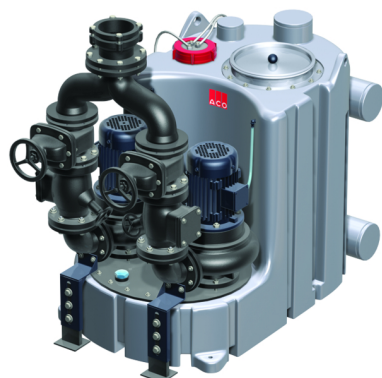


Muli Pro-PE K duo

Product information for the product group



ACO Product benefits

- Large usable tank volume
- Various inlet heights
- High level of operational safety thanks to pilot tube and air bubble injection
- Suitable for wastewater containing grease
- Can be extended in parallel lengths
- Energy-saving channel impeller
- Designed to fit through narrow doorways: 780 mm

- Areas of application
 - Apartment buildings
 - Small business premises with a high level of wastewater
 - Downstream of grease separators up to NS 20
 - Where there are long discharge pressure lines with a large difference in height
- Polyethylene tank
- With drain plug
- With connection for hand membrane pump 1½"
- With fixing kit for operationally secure attachment
- With 4 horizontal intake nozzles DN 150
- With 1 vertical intake nozzle DN 150
- With 1 service opening, clear width: 320 mm
- With ventilation sockets DN 100 to connect to plastic tube
- Connection pressure line
 - With 2 special backflow stops DN 80 (DN 100 on Muli Pro-PE K-75 duo) with venting device
 - With Y-branch
 - With special mounting adapter DN 100 for connection of 108 – 114.3 mm pipe external diameter pressure line
- 2 pump motors
 - Three phase motor 400 V, 50 Hz
 - IP 68 protection
 - With axle and rotating mechanical seal
 - With channel impeller
- Pneumatic level switching with pilot tube and pneumatic control line
- Mini compressor for air bubble injection
- Switch and alarm device
 - IP 54 protection
 - With 1.5 m cable and EEC plug
 - With volt free centralised fault and operational warnings
 - Incl. 7 m cable between lift and switch box.

Item Technical Data 0175.13.21

Type	Motor power		Key data			Granulation	Usable volume				Total volume	Weight
	P1	P2	Power consumption	Voltage	Rev count		Inlet height Z1	Inlet height Z2	Inlet height Z3	Top inlet		
	[kW]	[kW]	[A]	[V]	[U/min]		[l]	[l]	[l]	[l]		
Muli Pro-PE K-75 duo	8.97	7.5	15.5	400	1450	100	240	305	330	330	520	495

Note: The max. temperature must only be attained briefly.

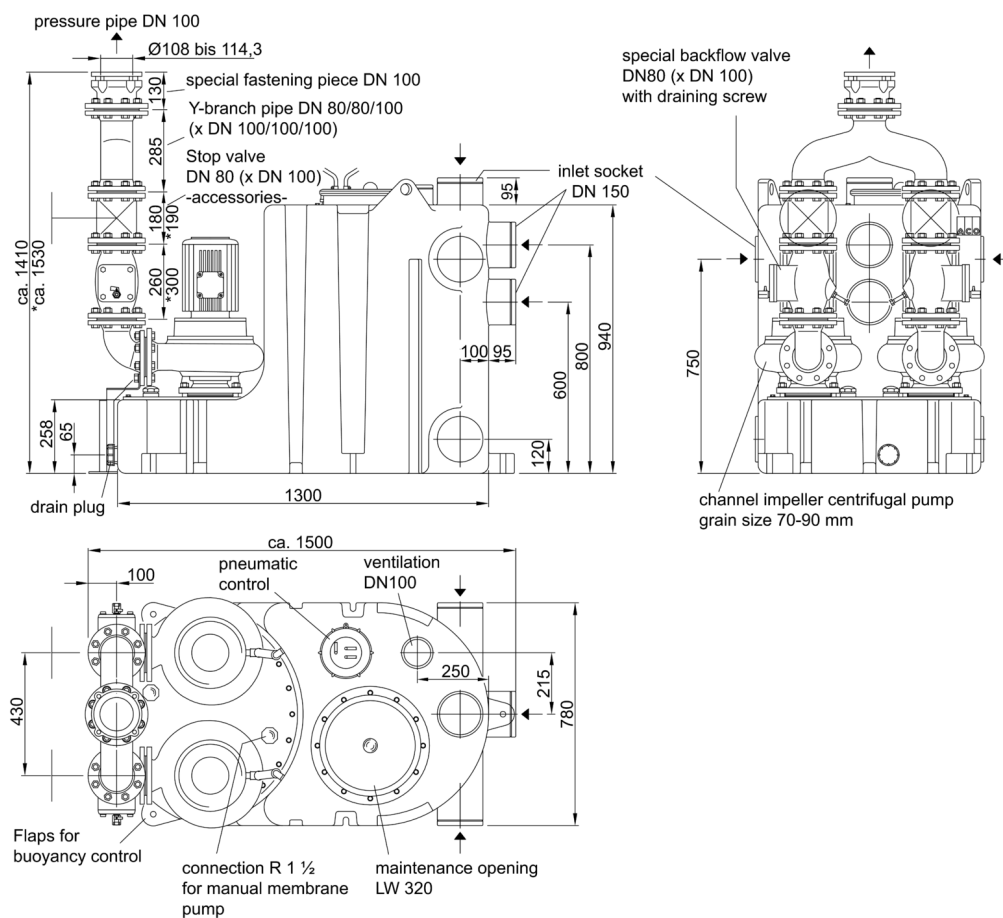
ACO eServices on the Internet:

Item number: 0175.13.21
 Version: 19.10.2018
 Page 1 of 4

Excluding errors and changes.

Infobox

Dimensions



Note: The max. temperature must only be attained briefly.

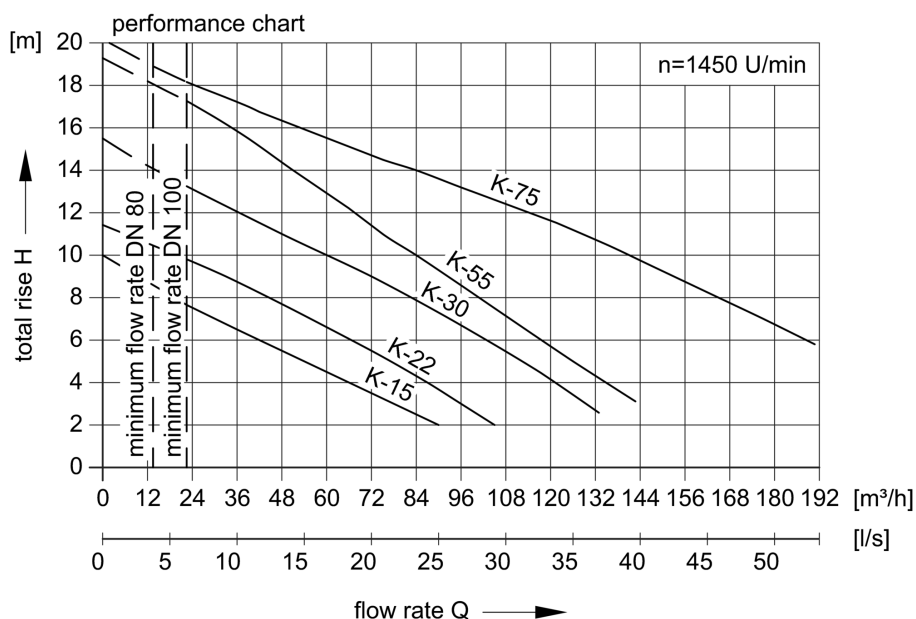
ACO eServices on the Internet:

Item number: 0175.13.21
 Version: 19.10.2018
 Page 2 of 4

Excluding errors and changes.

Infobox

Performance parameters



Type	Delivery head [m]	Delivery flow Q with overall delivery head H							Conveyance media temperature	
		6 m	8 m	10 m	12 m	14 m	16 m	18 m	Normal [°C]	Maximum [°C]
Muli Pro-PE K-75 duo	6 – 18	51.8 [l/s]	46.2 [l/s]	39.2 [l/s]	31.7 [l/s]	23.2 [l/s]	14.2 [l/s]	6.8 [l/s]	40	60

Accessories

	Description	Used with	Description	Item number
	Inlet valve DN 150	<ul style="list-style-type: none"> Wastewater lifting plant Polyethylene grease separator Polyethylene starch separator Upstream tank plant <ul style="list-style-type: none"> Type 7 – Type 10 	<ul style="list-style-type: none"> Made of PVC 160 mm push socket on both sides with rim sealing ring Overall dimensions: 226 x 510 mm (L x H) Weight: 7 kg 	0175.13.85
	Inlet valve DN 150		<ul style="list-style-type: none"> Weight: 10.2 kg 	0175.31.88

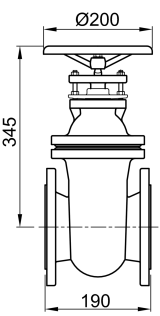
Note: The max. temperature must only be attained briefly.

ACO eServices on the Internet:

Item number: 0175.13.21
Version: 19.10.2018
Page 3 of 4

Excluding errors and changes.

Infobox

	Description	Used with	Description	Item number
	Stop valve DN 100	<ul style="list-style-type: none"> ■ Wastewater lifting plant 	<ul style="list-style-type: none"> ■ Made of cast iron ■ For pressure line ■ Length: 190 mm ■ Weight: 34.3 kg 	0159.09.90
	Securing piece ND 100	<ul style="list-style-type: none"> ■ Stop valve <ul style="list-style-type: none"> □ 0159.09.90 	<ul style="list-style-type: none"> ■ 8 screws and nuts ■ 1 seal ■ Weight: 1.3 kg 	0159.00.20

You can find further accessories under → /01751321

Note: The max. temperature must only be attained briefly.

ACO eServices on the Internet:

Item number: 0175.13.21

Version: 19.10.2018

Page 4 of 4